

## Identity Tile

Style Number	<b>5T284</b>	
Collection	<b>Haven</b>	
Product Type	<b>Carpet Tile</b>	
Construction	<b>Standard</b>	<b>Data + Performance</b>
Type of Manufacture	<b>ISO 2424</b>	<b>tufted 1/10"   39.4 per 10cm</b>
Aspect	<b>ISO 2424</b>	<b>Multi-Level Pattern Loop</b>
Dye Method	<b>EN 994</b>	<b>100% Solution Dyed</b>
Dimensions	<b>EN 994</b>	<b>25 cm x 100 cm   20 tiles (5 m<sup>2</sup>) per box</b>
Primary Backing	<b>ISO 2424</b>	<b>Pet Non-Woven</b>
Secondary Backing	<b>ISO 2424</b>	<b>Taskworx® Tile   Polymer Modified Bitumen</b>
Pile Fibre Composition	<b>ISO 2424</b>	<b>Eco Solution Q100™ Polyamide 6   Contains 100% Recycled Content</b>
Total Thickness	<b>ISO 1765</b>	<b>7.6 mm</b>
Effective Pile Thickness	<b>ISO 1766</b>	<b>2.5 mm</b>
Total Mass	<b>ISO 8543</b>	<b>4950 g/m<sup>2</sup></b>
Nominal Total Pile Mass	<b>ISO 2424</b>	<b>881 g/m<sup>2</sup></b>
Effective Pile Mass	<b>ISO 8543</b>	<b>317 g/m<sup>2</sup></b>
Pile Density	<b>ISO 8543</b>	<b>0.126 g/cm<sup>3</sup></b>
Total Recycled Content		<b>19% (pre-consumer 19%   post-consumer 0%)</b>

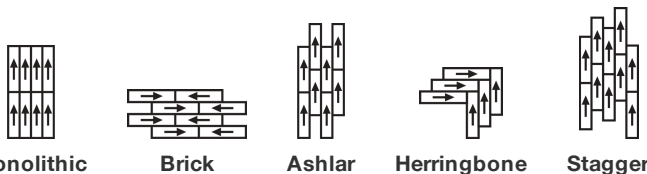


## Performance

Number of Tufts	<b>ISO 1763</b>	<b>129,000/m<sup>2</sup>   32.8 per 10cm</b>
Electrostatic Propensity	<b>ISO 6356</b>	<b>≤ 2.0 kV (stroll test)</b>
Use Classification	<b>EN 1307</b>	<b>33 commercial heavy*</b>
Luxury Class	<b>EN 1307</b>	<b>LC1</b>
Dimensional Stability	<b>EN 986</b>	<b>≤ 0.2%</b>
Impact Sound Insulation	<b>ISO 10140</b>	<b>26 dB</b>
Sound Absorption Classification	<b>ISO 354/11654</b>	<b>0.20 α<sub>w</sub>   Class E</b>
Thermal Resistance m <sup>2</sup> K/W	<b>ISO 8302</b>	<b>0.086 m<sup>2</sup> K/W TOG 0.86</b>
Dry Slip Resistance	<b>ISO 13893</b>	<b>pass</b>
Colour Fastness To Light	<b>ISO 105-B02</b>	<b>&gt;6</b>
Flammability	<b>EN 13501-1</b>	<b>Bfl-S1 (adhered testing)</b>
Castor Chair	<b>EN 985</b>	<b>≥2.4 Continuous Use</b>

**15 Year Commercial Limited Warranty** subject to installation in full accordance with manufacturer's instructions and a regular effective cleaning and maintenance programme.

## Recommended Installation Method



## Coordinating Products

Carpet Tile: **Honest Comfortworx® Tile, Familiar Comfortworx® Tile, Identity Comfortwo**



**CE**  
07  
EN14041  
DOP 0338/CPR/0517/0917/BT

Manufactured by: SHAW EUROPE LTD. BLACKADDIE ROAD INDUSTRIAL ESTATE, SANQUHAR, DG4 6DB, UK

E1  
HCHO

Bfl-s1

DS

Taskworx® Tile | Polymer Modified Bitumen Carpet Tile for use as an indoor floor covering as specified by the manufacturer  
Notified Body Number 0338

Corporate Headquarters +1 800 257 7429 | +1 706 532 7984 | Atlanta +1 404 853 7429 | Bengaluru +91 80 6773 0202 | Beijing +86 10 6568 588 | Chicago +1 312 467 1331 | Dubai +971 4 584 6956 | Hong Kong +852 2623 0371 | Latin America (Miami) +1 305 827 5912 | London +44 207 961 4120 | Los Angeles +1 800 233 1614 | Melbourne +61 3 9939 8543 | Mexico City +55 5010 7600 | Mumbai +91 22 6284 5050 | Nantong +86 400 800 7429 | New York +1 212 953 7429 | Paris +33 (0) 1 81 22 44 39 | San Francisco +1 415 955 1920 | Santiago +562 2431 5000 x 550 | São Paulo +55 11 3071 1702 | Shanghai +86 21 3338 4000 | Singapore +65 6733 1811 | Sydney +1 800 556 302

## Product Transparency

Shaw Contract is dedicated to providing clients with a building chemistry that's safe and dependable. Working together, we will help you meet your goals as they pertain to material health. TaskWorx® products are Cradle to Cradle Certified® Bronze and assessed for impacts on human health and the environment. This product can be recycled. When it's time to replace, we can collect through our re-[TURN] scheme in EMEA.

## Attributes + Certifications

Cradle to Cradle Certified®	<b>Bronze Level (Version 3.1)</b>
Environmental Product Declaration (EPD)	<b>3rd Party Certified in Accordance with ISO 14044, ISO 14025 &amp; EN15804</b>
Embodied Carbon (Cradle to Gate)	<b>9.729 kg CO<sub>2</sub>/m<sup>2</sup> (based upon 640 g/m<sup>2</sup> face weight)</b>
Life-Cycle Carbon Emissions	<b>Carbon Neutral</b>
Building Research Establishment (BRE)	<b>A+ Health/A+ Retail 0.387/0.519 Ecopoints</b>
Environmental Guarantee*	<b>Take Back Policy Offered For All Taskworx Products</b>
Country of Origin**	<b>United Kingdom</b>

## LEED Contribution Credit

MR Credit: Building Product Disclosure and Optimization Environmental Product Declarations - Option 1: Environmental Product Declaration (EPD)	<b>3rd Party Certified in Accordance with ISO 14044, ISO 14025 &amp; EN15804</b>
MR Credit: Building Product Disclosure and Optimization Material Ingredients - Option 1: Material Ingredient Reporting	<b>C2C Bronze Level (Version 3.1)</b>
MR Credit: Building Product Disclosure and Optimization Material Ingredients - Option 2: Material Ingredient Optimization	<b>C2C Bronze Level (Version 3.1)</b>

## Additional Information

\*\*Manufactured in ISO 9001 certified facility. Meets or exceeds all local and national regulations in country of manufacture.

[Installation Guidelines](#)

[Maintenance Guidelines](#)

Specifications are subject to nominal manufacturing variance. Material supply and/or manufacturing processes may necessitate changes without notice.

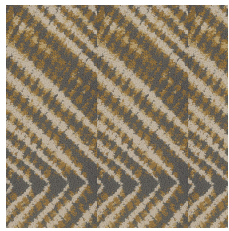
This product is an exclusive design and may not be duplicated in any manner. Use of this design in the creation of another product design is also strictly prohibited.

Visit [shawcontract.com/testing](http://shawcontract.com/testing) for more information.

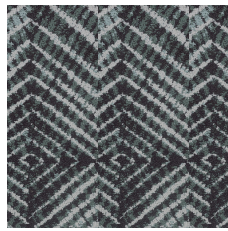


Corporate Headquarters +1 800 257 7429 | +1 706 532 7984 | Atlanta +1 404 853 7429 | Bengaluru +91 80 6773 0202 | Beijing +86 10 6568 588 | Chicago +1 312 467 1331 | Dubai +971 4 584 6956 | Hong Kong +852 2623 0371 | Latin America (Miami) +1 305 827 5912 | London +44 207 961 4120 | Los Angeles +1 800 233 1614 | Melbourne +61 3 9939 8543 | Mexico City +55 5010 7600 | Mumbai +91 22 6284 5050 | Nantong +86 400 800 7429 | New York +1 212 953 7429 | Paris +33 (0) 1 81 22 44 39 | San Francisco +1 415 955 1920 | Santiago +562 2431 5000 x550 | São Paulo +55 11 3071 1702 | Shanghai +86 21 3338 4000 | Singapore +65 6733 1811 | Sydney +1 800 556 302

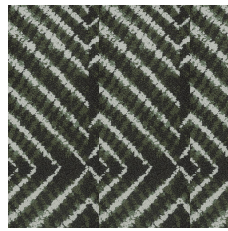
### Light Reflectance Value



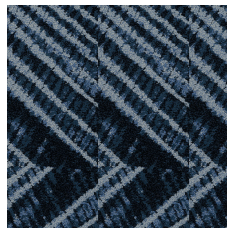
LRV 23.3  
Golden 35210



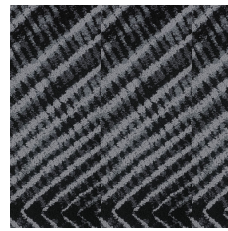
LRV 17.9  
Mint 35327



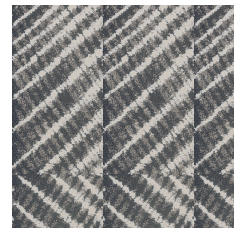
LRV 15.4  
Ivy 35375



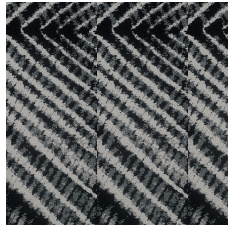
LRV 11.4  
Overdye 35496



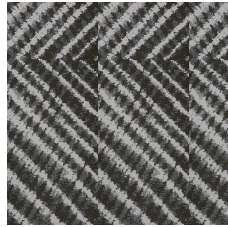
LRV 8.4  
Raven 35505



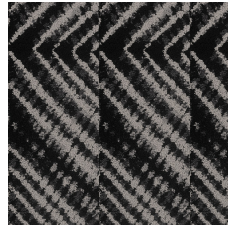
LRV 32.5  
Greige 35516



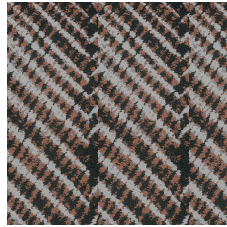
LRV 18.8  
Fog 35518



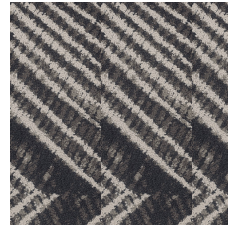
LRV 14.9  
Rainstorm 35535



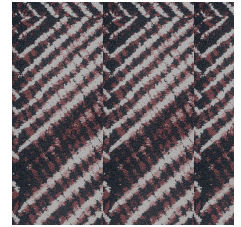
LRV 10.9  
Espresso 35585



LRV 18.9  
Apricot 35675



LRV 12.5  
Truffle 35760



LRV 20  
Rosewood 35870