



CARVE

CARVE

- Level cut loop structured carpet for contemporary floor coverings
- Made from 100% polyamide with a Cl.32 and B_{fl}-s1 rating
- Suitable for commercial and hospitality interiors
- 2 designs available from stock
- Limitless creativity in designs and colours for bespoke solutions
- Improved acoustic insulation

- Moquette structurée 'level cut loop' pour revêtements de sol contemporains
- Composé de polyamide 100% avec un classement 32 et B_{fl}-s1
- Convient aux intérieurs commerciaux et en 'hospitalité'
- 2 dessins disponibles de stock
- Créativité illimitée en dessins et en coloris pour de solutions sur mesure
- Isolation acoustique améliorée

- LCL strukturierte Qualität für zeitlose Teppichböden
- Hergestellt aus 100% Polyamid mit CL.32 und B_{fl}-s1 Ausstattung
- Geeignet für Objektbereich und Wohnbereich
- Zwei Dessins aus Lagervorrat erhältlich
- Unbegrenzte Kreativität in Dessin und Farbe für individuelle Lösungen
- Getestete akkustische Eigenschaften

- Level cut loop gestructureerd tapijt voor hedendaagse vloerbedekkingen
- Gemaakt van 100% polyamide met een Cl.32 en B_{fl}-s1 rating
- Geschikt voor hospitality en commerciële omgeving
- 2 dessins beschikbaar op stock
- Onbepaalde creativiteit in dessin en kleur voor een oplossing op maat
- Verbeterde akoestische isolatie

- Moquette strutturata "cut loop" per pavimentazioni dallo stile moderno
- Composizione 100% poliammide certificata classe d'uso 32 e reazione al fuoco B_{fl}-s1
- Ideale per camere d'albergo
- 2 disegni disponibili a stock
- Possibilità di personalizzazione sia del disegno che dei colori
- Migliorate performance di assorbimento acustico





Luxurious SILENCE

Lano Carpets' unique acoustic felt backing enhances:

- E • 300gr polyester contract backing
- 31 dB sound insulation
- 0.35 α_w sound absorption

Amélioration acoustique unique des moquettes Lano sur dossier feutre :

- FR • Dossier 'bâtiment' 300 gr polyester
- Isolation de 31 dB aux bruits d'impact
- Absorption phonique 0.35 α_w

Lano Carpet's einzigartiger, akkustisch verbesserter: Vliesrücken

- D • 300g Polyester Contract Backing
- 31 dB Schalldämpfung
- 0.35 α_w Schallabsorption

Lano Carpets' unieke akoestische viltrug:

- NL • 300gr polyester contract viltrug
- 31 dB contactgeluidsisolatie
- 0.35 α_w geluidsdempingsvermogen

L'ottimo sottofondo in feltro di Lano si caratterizza per:

- I • composizione in poliestere e peso al mq di 300gr, che lo rendono adatto per uso contract
- 31 dB isolamento acustico
- 0.35 α_w assorbimento acustico



CARVE Concept

- E • Standard designs in custom colours require a min. of 200m²
- Custom designs and colours with a standard backing require a min. of 200m²
- Custom designs and colours with a custom backing require a min. of 400m²
- FR • min. de 200m² pour des dessins standards en coloris personnalisés
- min. de 200m² pour des dessins et coloris personnalisés
- min. de 400m² pour des dessins et coloris personnalisés avec un dossier personnalisé
- D • Standarddessins in Sonderfarben ab 200m²
- Sonderdessins und Sonderfarben mit Standardrücken ab 200m²
- Sonderdessins und Sonderfarben mit Sonderrücken ab 400m²
- NL • Standaard dessins met gepersonaliseerde kleuren vanaf 200m²
- Gepersonaliseerde dessins en kleuren met standaard backing vanaf 200m²
- Gepersonaliseerde dessins en kleuren met speciale backing vanaf 400m²
- I • Disegni standard in colori speciali: ordine minimo 200m²
- Disegni e colori speciali con sottofondo standard (feltro): ordine minimo 200m²
- Disegni, colori e sottofondo speciali: ordine minimo 400m²

Every great
design
begins with
an even better
STORY







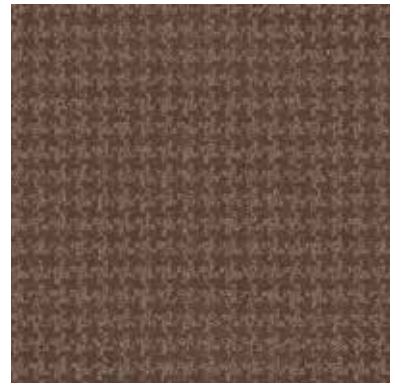
Carve LCL.235 R= ► 10 cm x ▲ 5 cm



“To Be Inspired”



LCL.156 R= ► 95 cm x ▲ 100 cm



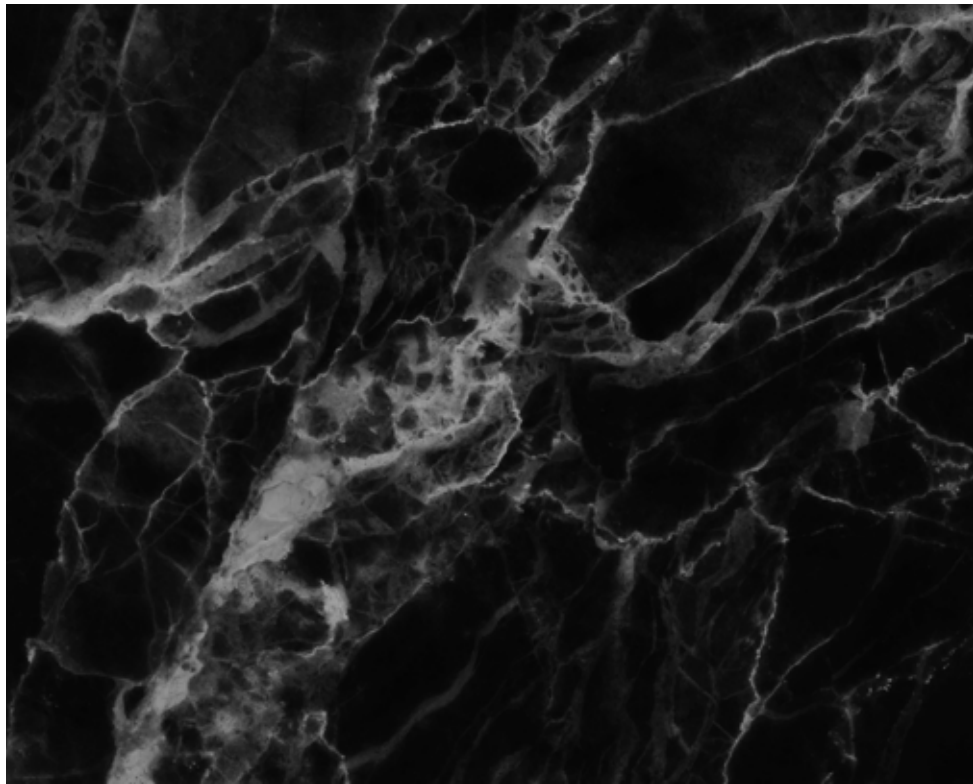
LCL.185 R= ► 3 cm x ▲ 3,5 cm

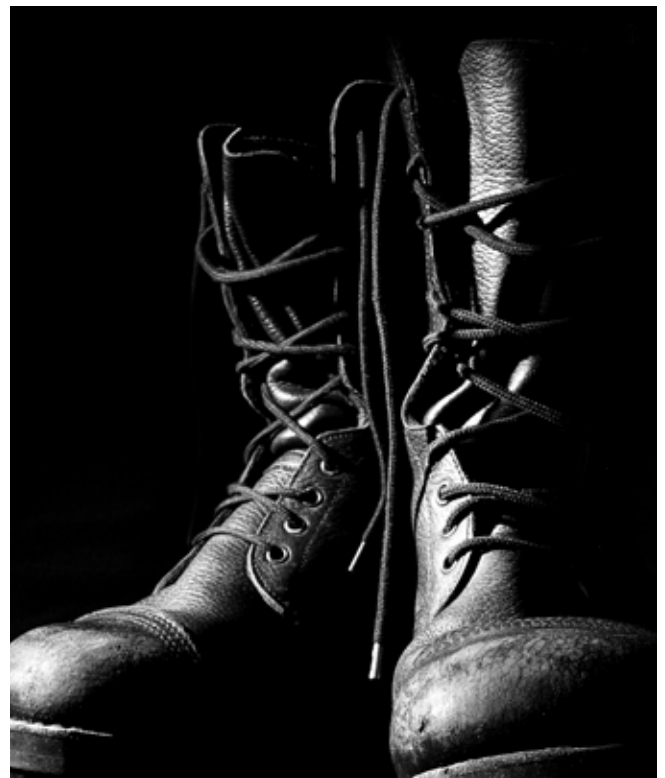


LCL.234 R= ► 97,5 cm x ▲ 97,5 cm



LCL.252 R= ► 97,5 cm x ▲ 95,7 cm



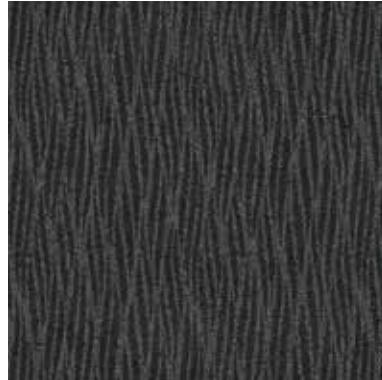




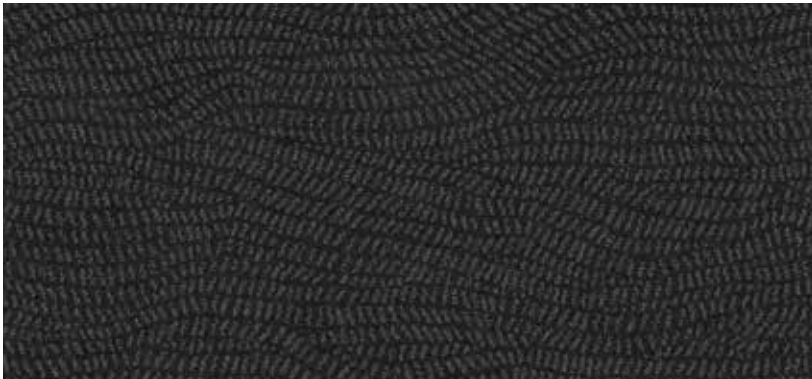
“To Be Inspired”



LCL.108 R= ▶ 97,5 cm x ▲ 100 cm



LCL.223 R= ▶ 49 cm x ▲ 48 cm



LCL.206 R= ▶ 100 cm x ▲ 100 cm



Carve LCL.239 R= ▶ 97 cm x ▲ 98 cm







Carve LCL.243 R= ▶ 390 cm x ▲ 302 cm



— "To Be Inspired" —



LCL.136 R= ► 97,5 cm x ▲ 97,5 cm



LCL.226 R= ► 97,5 cm x ▲ 95,7 cm



LCL.213 R= ► 195 cm x ▲ 195 cm







“To Be Inspired”



LCL.222 R= ▶ 97,5 cm x ▲ 95,7 cm



LCL.225 R= ▶ 97,5 cm x ▲ 95,7 cm



LCL.233 R= ▶ 48,7 cm x ▲ 48,3 cm

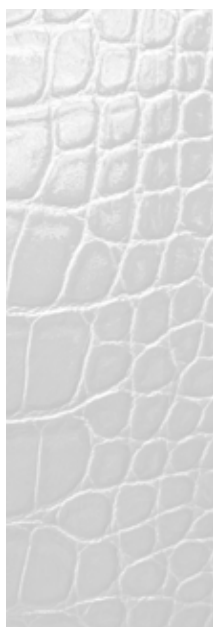


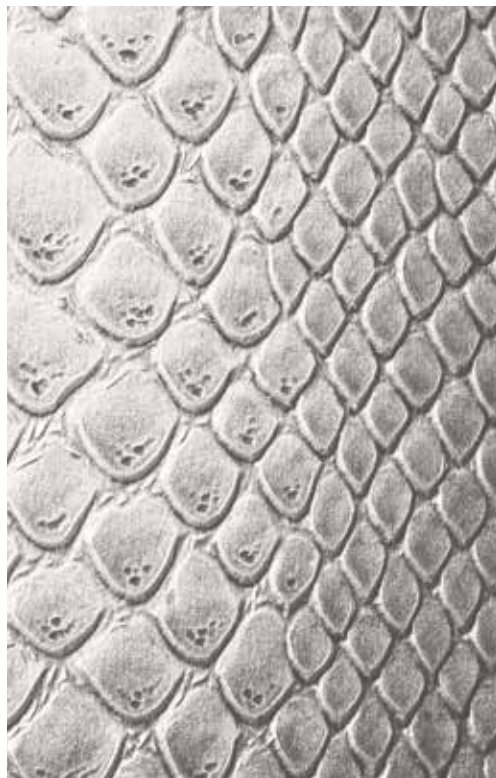
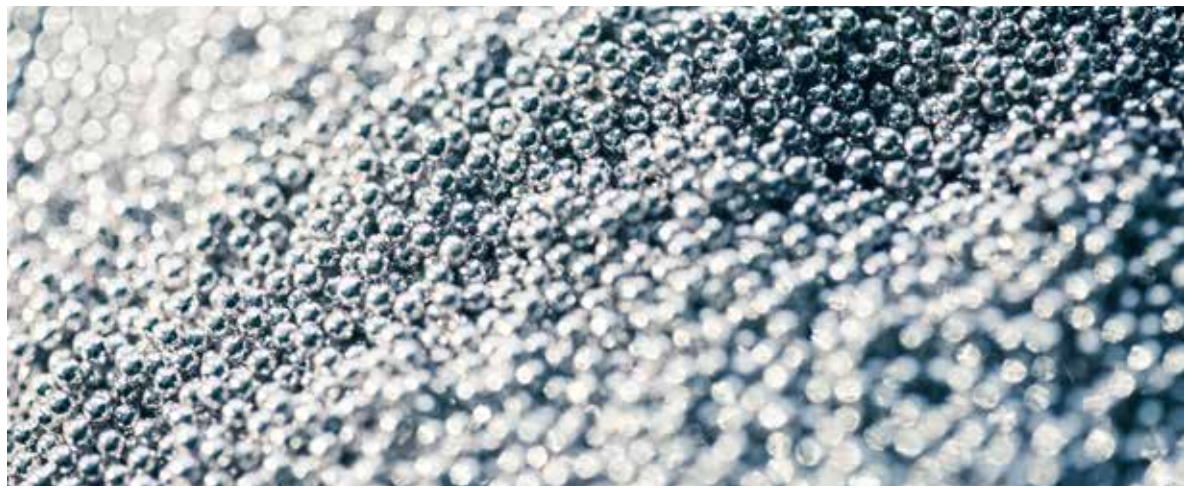
LCL.255 R= ▶ 12,2 cm x ▲ 9,8 cm



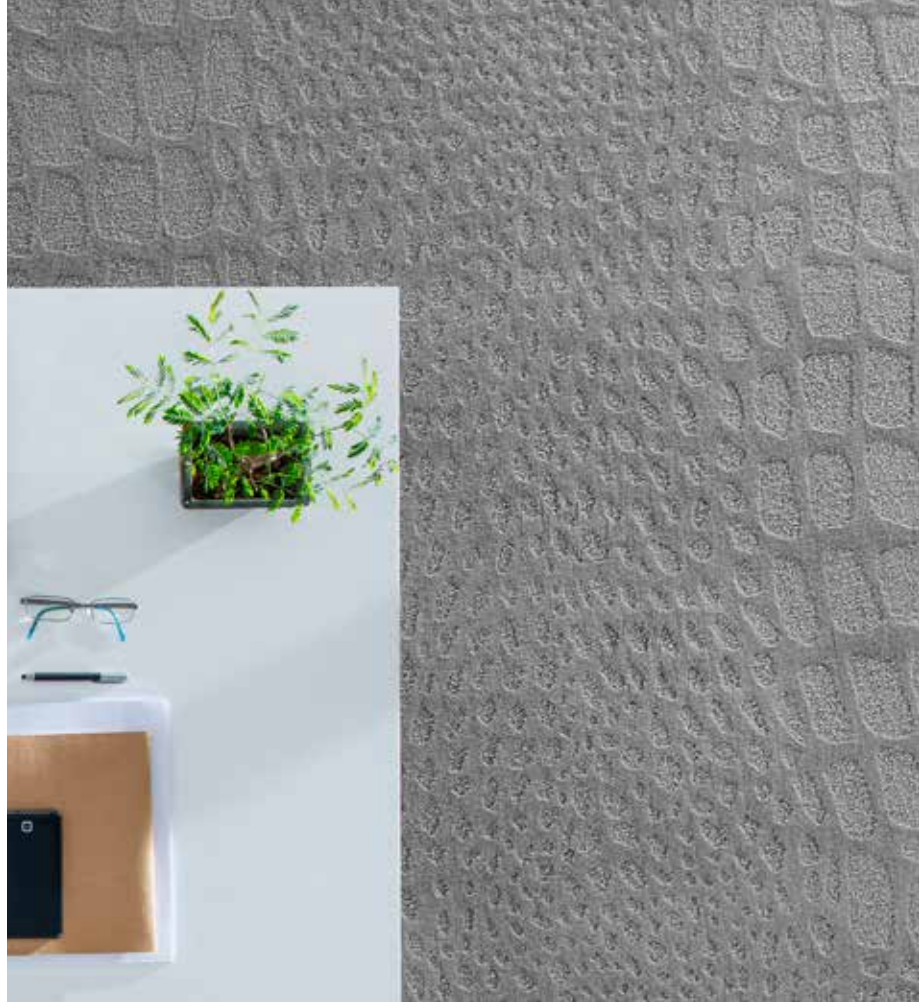


Carve LCL.231 R= ▶ 97 cm x ▲ 113 cm





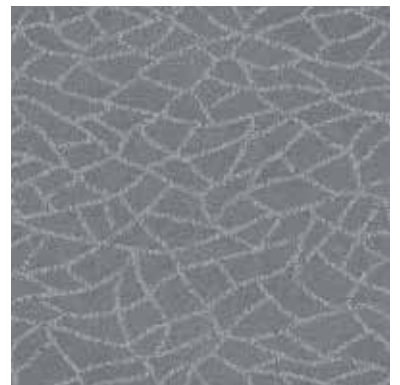




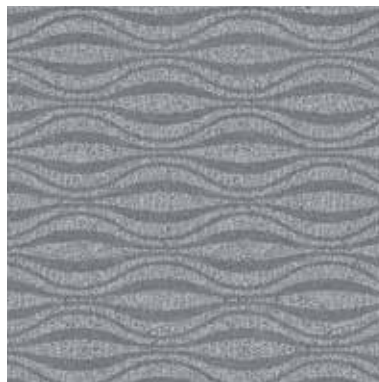
“To Be Inspired”



LCL.171 R= ► 195 cm x ▲ 133 cm



LCL.192 R= ► 97,5 cm x ▲ 60,7 cm



LCL.106 R= ► 48,7 cm x ▲ 28,8 cm



LCL.215 R= ► 97,5 cm x ▲ 97,5 cm







“To Be Inspired”



LCL.121 R= ▶ 97,5 cm x ▲ 100 cm



LCL.220 R= ▶ 97,5 cm x ▲ 95,7 cm



LCL.253 R= ▶ 97,5 cm x ▲ 101 cm

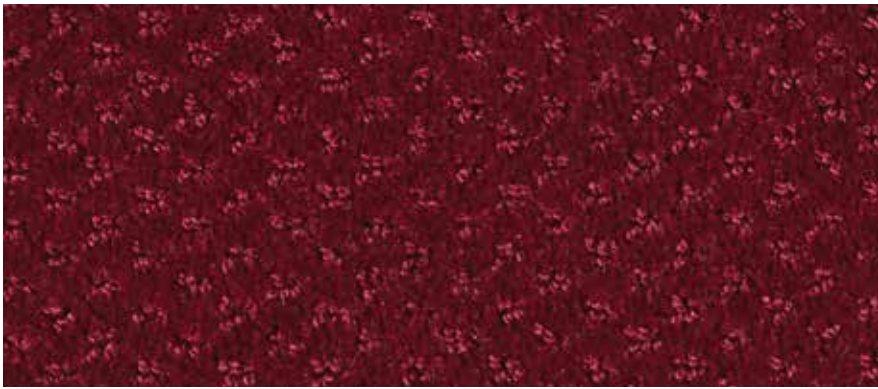


LCL.254 R= ▶ 97,5 cm x ▲ 101 cm





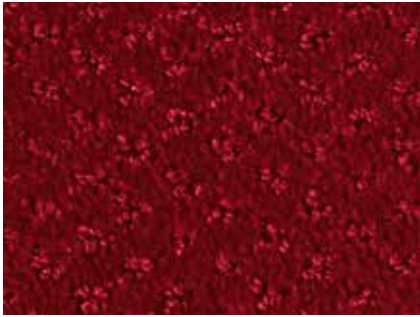
Carve LCL.219 R= ▶ 195 cm x ▲ 192 cm



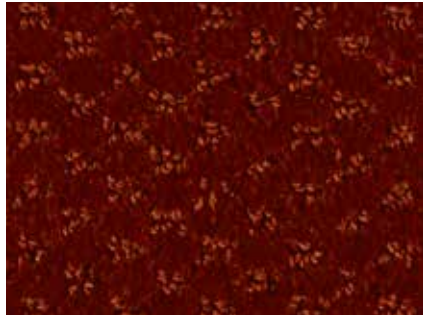
CFA.100



CFA.790



CFA.120



CFA.310



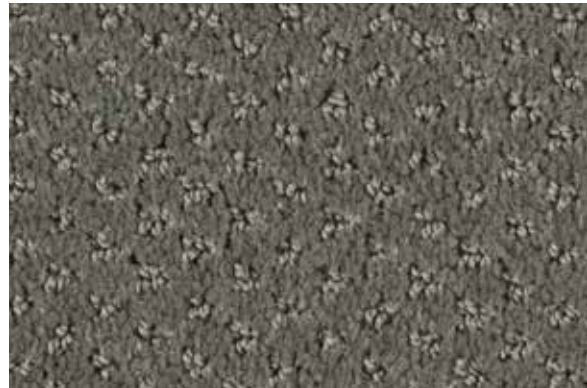
CFA.710



CFA.530



CFA.251



CFA.840



CFA.261



CFA.280



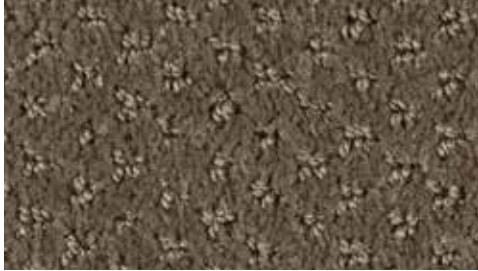
CFA.291



CFA.821



CFA.431



CFA.420



CFA.410



CFA.810



"Carve Classic"

Available from stock

"Carve Linea"

Available from stock



CFB.852



CFB.840



CFB.821



CFB.812



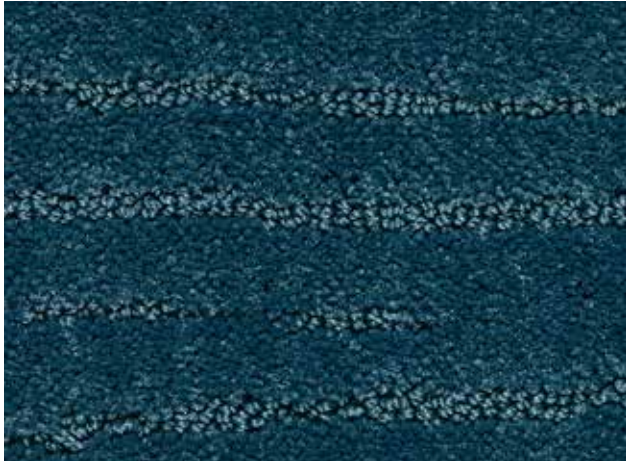
CFB.802



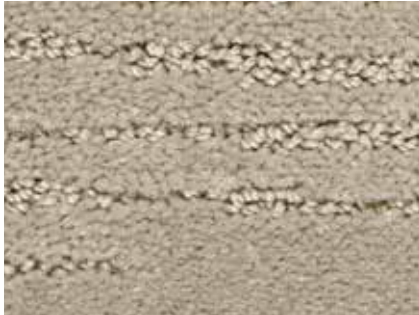
CFB.852



CFB.662



CFB.722



CFB.431



CFB.251



CFB.012



CFB.182



CFB.122



CFB.062



CFB.261



CFB.410



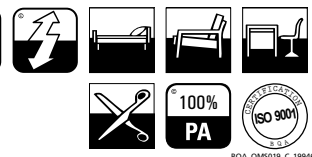
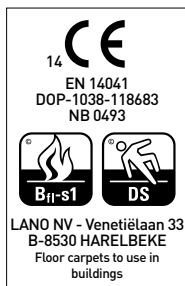
CFB.192

CARVE

lano carpets for hospitality

Secondary Backing Rugtype • Envers Rücken • Sottofondo	FBP	ISO 354 Sound absorption α_s Geluidsdempingsvermogen α_s • Absorption phonique α_s Schallabsorptionsgrad α_s • Grado d'assorbimento acustico α_s	± 0,32 (1000 Hz)
Manufacturing process Fabricagemethode • Technique de fabrication Herstellungsart • Tecnica di fabbricazione	tufted, 1/10" cut loop	ISO 11654 Sound absorption α_w Geluidsdempingsvermogen α_w • Absorption phonique α_w Schallabsorptionsgrad α_w • Grado d'assorbimento acustico α_w	± 0,35
Pile composition Poolsamenstelling • Nature du velours Polmaterial • Composizione felpa	PA	DIN 52612 Thermal retention Warmtedoorlaatweerstand • Résistivité thermique Wärmedurchlaßwiderstand • Resistenza termica	± 0,147 m²/kW
Primary backing Tuftdoek • Premier dossier Trägermaterial • Tela di supporto	non woven	TOG rating	± 1,47
Width Breedte • Largeur Breite • Altezza	± 400 cm	ISO 6356 Teil 2 Permanently antistatic Permanent antistatisch • Antistatique permanent Permanent antistatisch • Antistatico permanente	< 2 kV
Effective pile height Nuttige poolhoogte • Hauteur de velours utile Tatsächliche Florhöhe • Spessore felpa utile	± 6,0 mm	ISO 6356 Teil 6 Surface resistance RoT Oppervlaktweerstand RoT • Résistance horizontale RoT Oberflächenwiderstand RoT • Resistenza in superficie RoT	≤ 10¹¹ Ω
Total height Totale dikte • Hauteur totale Gesamthöhe • Spessore totale	± 10 mm	ISO 10965 Teil 6 Vertical resistance RdT Doorgangswaerstand RdT • Résistance transversale RdT Durchgangswiderstand RdT • Resistenza ai passaggi RdT	≤ 10¹⁰ Ω
Number of knots/sqm Aantal noppen/m ² • Nombre de points/m ² Noppenzahl/m ² • Numero di punti/mq	± 204.880	ISO 105 B02 2000 Lightfastness Lichtechtheid • Solidité à la lumière Lichtechtheid • Solidità colori alla luce	≥ 5
Pile weight/sqm Poolinzetgewicht/m ² • Poids mis en oeuvre/m ² Poleinsatzgewicht/m ² • Peso felpa/mq	± 1.180 gr	ISO 105 E01 2002 Waterfastness change in colour Waterechtheid verkleuring • Solidité à l'eau changement couleur Wasserechtheit Änderung der Farbe • Solidità colori all'acqua cambio colore	≥ 3-4
Total weight/sqm Totaal gewicht/m ² • Poids total/m ² Gesamtwicht/m ² • Peso totale/m ²	± 2.540 gr	ISO 105 E01 2002 Waterfastness staining Waterechtheid uitbloeding • Solidité à l'eau dégorgeement Wasserechtheit anbluten • Solidità colori all'acqua sfumatura colore	≥ 3-4
EN 13501-1 Fire behaviour Brandgedrag • Comportement au feu Brennverhalten • Reazione al fuoco	B_{fl}-s1	ISO 105 X12 2001 Rubbingfastness dry Wrijftechtheid droog • Solidité au frottement sec Reibungechtheit trocken • Solidità colori allo sfregamento a secco	≥ 3-4
EN 1307-2004 Classification Classificatie • Classification Klassifizierung • Classificazione	Class 32 Commercial General	ISO 105 X12 2001 Rubbingfastness wet Wrijftechtheid nat • Solidité au frottement humide Reibungechtheit nass • Solidità colori allo sfregamento umido	≥ 3
ISO 140/8 1997 Impact sound insulation Contactgeluidsisolatie • Isolation aux bruits d'impact Trittschallverbesserungsmaß • Miglioramento acustico	± 31 dB	Ce produit s'inscrit dans la démarche HQE (F.D.E.S. selon la norme NF P01-10 disponible sur demande). F.D.E.S. = fiche de données environnementales et sanitaires.	HQE

[±] These details are approximate. Complete specification details and associated certificates together with tolerances applying to the above can be provided upon request. We reserve the right to improve technical specifications without prior notice. Due to method of manufacture perfect pattern and/or colour matching cannot be guaranteed. In cut-pile carpeting, in rare cases, shading pile reversal may occur without affecting its fitness for use. Shading/pile reversal can not be considered as a manufacturing or a material defect and will not affect the durability of the carpet. For other languages see: www.lano.com





Lano
Venetiëlaan 33
8530 Harelbeke

www.lano.com



Lano
Venetiëlaan 33
8530 Harelbeke

www.lano.com