

Array Tile

Style Number	5T333	
Collection	Simply By Nature	
Product Type	Carpet Tile	
Construction	Standard	Data + Performance
Type of Manufacture	ISO 2424	tufted 1/10" 39.4 per 10cm
Aspect	ISO 2424	Multi-Level Pattern Loop
Dye Method	EN 994	100% Solution Dyed
Dimensions	EN 994	50 cm x 50 cm 20 tiles (5 m²) per box
Primary Backing	ISO 2424	Pet Non-Woven
Secondary Backing	ISO 2424	Taskworx® Tile Polymer Modified Bitumen
Pile Fibre Composition	ISO 2424	Eco Solution Q® Polyamide 6
Total Thickness	ISO 1765	6.3 mm
Effective Pile Thickness	ISO 1766	2.4 mm
Total Mass	ISO 8543	3748 g/m²
Nominal Total Pile Mass	ISO 2424	542 g/m²
Effective Pile Mass	ISO 8543	289 g/m²
Pile Density	ISO 8543	0.122 g/cm³

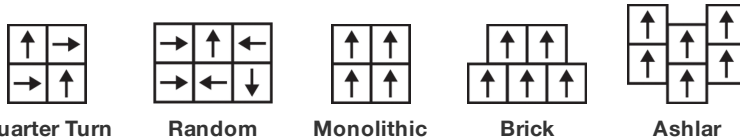


Performance

Number of Tufts	ISO 1763	160,000/m² 40.7 per 10cm
Protective Treatments		SSP® Shaw Soil Protection
Electrostatic Propensity	ISO 6356	≤ 2.0 kV (stroll test)
Use Classification	EN 1307	33 commercial heavy
Luxury Class	EN 1307	LC1
Dimensional Stability	EN 986	≤ 0.2%
Impact Sound Insulation	ISO 10140	27 dB
Sound Absorption Classification	ISO 354/11654	0.20 α_w Class E
Thermal Resistance m ² K/W	ISO 8302	0.076 m² K/W TOG 0.76
Dry Slip Resistance	ISO 13893	pass
Colour Fastness To Light	ISO 105-B02	>6
Flammability	EN 13501-1	Bfl-S1 (adhered testing)
Castor Chair	EN 985	≥2.4 Continuous Use

[15 Year Commercial Limited Warranty](#) subject to installation in full accordance with manufacturer's instructions and a regular effective cleaning and maintenance programme.

Recommended Installation Method



Coordinating Products

Carpet Tile: **Arrange Tile, Offset Tile, Structure Tile**



CE
07
EN14041
DOP 0338/CPR/0517/0917/BT

Manufactured by: SHAW EUROPE LTD. BLACKADDIE ROAD INDUSTRIAL ESTATE, SANQUHAR, DG4 6DB, UK

E1
HCHO

Bfl-s1

DS

Taskworx® Tile | Polymer Modified Bitumen Carpet Tile for use as an indoor floor covering as specified by the manufacturer
Notified Body Number 0338

Corporate Headquarters +1 800 257 7429 | +1 706 532 7984 | Atlanta +1 404 853 7429 | Bengaluru +91 80 6773 0202 | Beijing +86 10 6568 588 | Chicago +1 312 467 1331 | Dubai +971 4 584 6956 | Hong Kong +852 2623 0371 | Latin America (Miami) +1 305 827 5912 | London +44 207 961 4120 | Los Angeles +1 800 233 1614 | Melbourne +61 3 9939 8543 | Mexico City +55 5010 7600 | Mumbai +91 22 6284 5050 | Nantong +86 400 800 7429 | New York +1 212 953 7429 | Paris +33 (0) 1 81 22 44 39 | San Francisco +1 415 955 1920 | Santiago +562 2431 5000 x550 | São Paulo +55 11 3071 1702 | Shanghai +86 21 3338 4000 | Singapore +65 6733 1811 | Sydney +1 800 556 302

Product Transparency

Shaw Contract is dedicated to providing clients with a building chemistry that's safe and dependable. Working together, we will help you meet your goals as they pertain to material health. TaskWorx® products are Cradle to Cradle Certified® Bronze and assessed for impacts on human health and the environment. This product can be recycled. When it's time to replace, we can collect through our re-[TURN] scheme in EMEA.

Attributes + Certifications

Cradle to Cradle Certified®	Bronze Level (Version 3.1)
Environmental Product Declaration (EPD)	3rd Party Certified in Accordance with ISO 14044, ISO 14025 & EN15804
Building Research Establishment (BRE)	A+ Health/A+ Retail 0.387/0.519 Ecopoints
Environmental Guarantee*	Take Back Policy Offered For All Taskworx Products
Country of Origin**	United Kingdom

LEED Contribution Credit

MR Credit: Building Product Disclosure and Optimization Environmental Product Declarations - Option 1: Environmental Product Declaration (EPD)	3rd Party Certified in Accordance with ISO 14044, ISO 14025 & EN15804
MR Credit: Building Product Disclosure and Optimization Material Ingredients - Option 1: Material Ingredient Reporting	C2C Bronze Level (Version 3.1)
MR Credit: Building Product Disclosure and Optimization Material Ingredients - Option 2: Material Ingredient Optimization	C2C Bronze Level (Version 3.1)

Additional Information

**Manufactured in ISO 9001 certified facility. Meets or exceeds all local and national regulations in country of manufacture.

[Installation Guidelines](#)

[Maintenance Guidelines](#)

Specifications are subject to nominal manufacturing variance. Material supply and/or manufacturing processes may necessitate changes without notice.

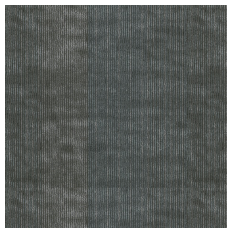
This product is an exclusive design and may not be duplicated in any manner. Use of this design in the creation of another product design is also strictly prohibited.

Visit shawcontract.com/testing for more information.

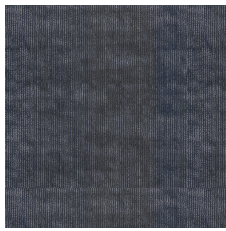


Corporate Headquarters +1 800 257 7429 | +1 706 532 7984 | Atlanta +1 404 853 7429 | Bengaluru +91 80 6773 0202 | Beijing +86 10 6568 588 | Chicago +1 312 467 1331 | Dubai +971 4 584 6956 | Hong Kong +852 2623 0371 | Latin America (Miami) +1 305 827 5912 | London +44 207 961 4120 | Los Angeles +1 800 233 1614 | Melbourne +61 3 9939 8543 | Mexico City +55 5010 7600 | Mumbai +91 22 6284 5050 | Nantong +86 400 800 7429 | New York +1 212 953 7429 | Paris +33 (0) 1 81 22 44 39 | San Francisco +1 415 955 1920 | Santiago +562 2431 5000 x550 | São Paulo +55 11 3071 1702 | Shanghai +86 21 3338 4000 | Singapore +65 6733 1811 | Sydney +1 800 556 302

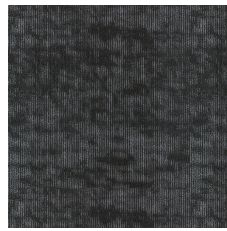
Light Reflectance Value



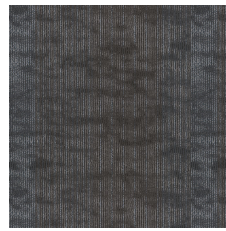
LRV 7.5
Glassy Green 94335



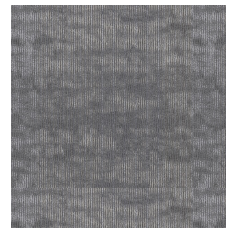
LRV 6.8
Shimmery Blue 94485



LRV 4.6
Chrome Black 94500



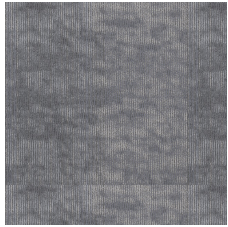
LRV 5.8
Glossy Charcoal 94505



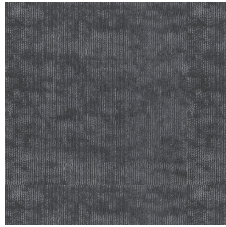
LRV 13.9
Sterling Silver 94515



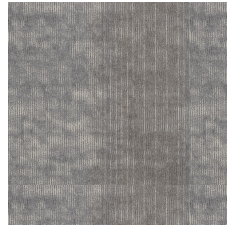
LRV 8.2
Steel Grey 94530



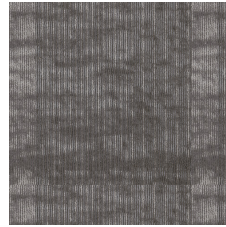
LRV 14.3
Mirror Grey 94535



LRV 7.5
Polished Stone 94557



LRV 18.0
Metallic Beige 94760



LRV 9.7
Shiny Pebble 94761