

# acsento

COLLECTION 2024

PASSIONATE  
ABOUT CLIENTS  
AND RUGS



# Content

## FLANDERS

Bolzano	64
Chiara 826	16
Chiara 949	18
Chiara 1016	12
Chiara 1018	14
Chiara 1097	6
Chiara Ivory	8
Chiara Waves	10
Classico 961-963	34
Curzo	48
Diamo	68
Ecstasy	72
Faro 880	20
Faro 884	22
Freek	70
Geometrics	66
Grunge	62
Himalaya	32
Loni 105	28
Loni 3128	30
Meda	60
Merron	46
Mila 011	24
Mila 016	26
Mystic	50
Nuance	56
Rabat	54
Tara Deluxe	40
Venice	36

## HANDMADE

Bastia	80
Corfu	76
Corte	82
Elba	88
Kreta	90
Madeira	98
Napoli	96
Pella	92
Piana	84
Ravenna	94
<b>Organic Shapes</b>	<b>44</b>

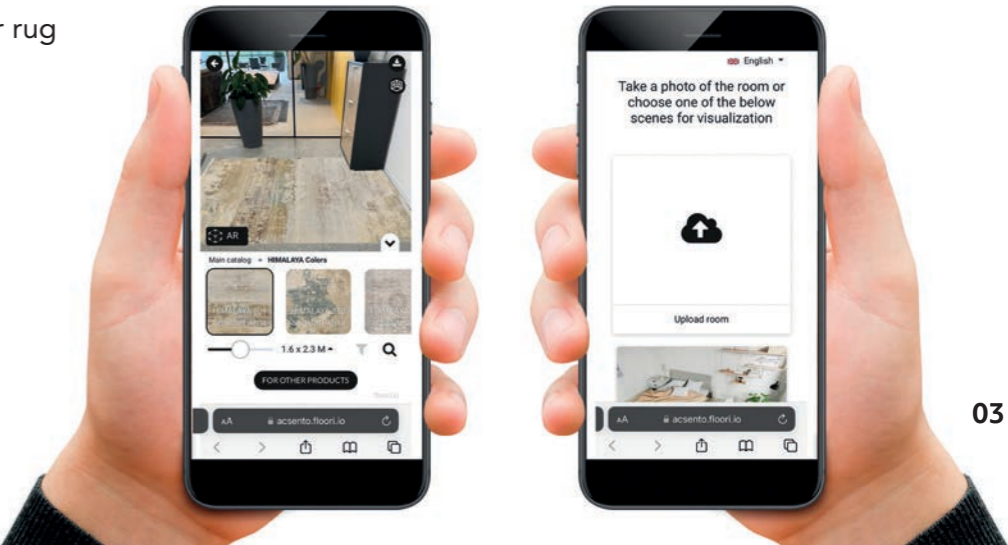


# Augmented Reality

Visualize your rug with Augmented Reality and integrate it in your interior

With your smartphone or tablet:

- Scan the QR code on your sample or on the desired page of your catalogue
- Take a picture of the area where you want to visualize or upload a photo of your interior
- Choose the color and the dimensions of your rug

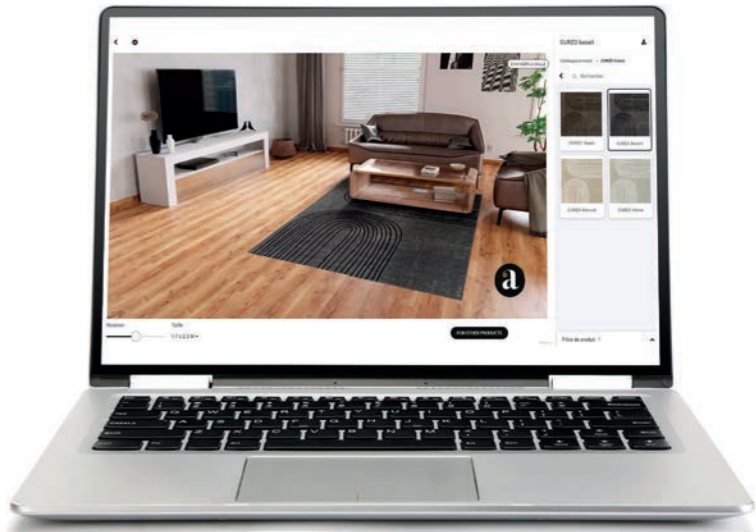


03

On the Accento webshop:

- Choose a rug and click on the HOME VISUALIZER button
- Upload a photo of your interior or choose an existing setting
- Click on the location where you would like to place the rug, then choose the color and dimensions of your rug

[webshop.accento.com](http://webshop.accento.com)





# Flanders collection

05



Timeless perfection,  
ecological products  
woven in local weaving mills.

# Chiara 1097

## QUALITY

- viscose, wool
- 1550g/m<sup>2</sup> - 4 mm
- machine made - Belgium

## STANDARD SIZES

- 160x230 cm
- 200x290 cm
- 240x340 cm
- 280x380 cm

## SPECIAL SIZES

- max width 280 cm
- max length 380 cm

## SHAPES



## DELIVERY

- standard sizes: 2 weeks
- special sizes: 4 weeks



beige /taupe green



beige/stone



ivory /warm beige



Ivory/ivory



# Chiara Ivory

## QUALITY

- viscose, wool
- 1550g/m<sup>2</sup> - 4 mm
- machine made - Belgium

## STANDARD SIZES

- 160x230 cm
- 200x290 cm
- 240x340 cm
- 280x380 cm

## SPECIAL SIZES

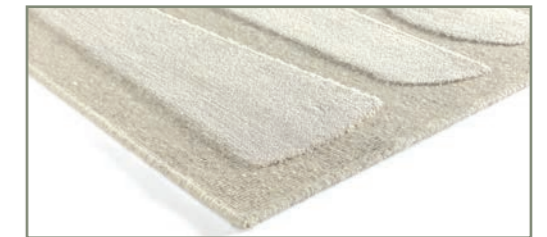
- max width 280 cm
- max length 380 cm

## SHAPES



## DELIVERY

- standard sizes: 2 weeks
- special sizes: 4 weeks



quadra - ivory/ivory



diabolo - ivory/ivory



horizon - ivory/ivory



waves - ivory/ivory



# Chiara Waves

## QUALITY

- viscose, wool
- 1550g/m<sup>2</sup> - 4 mm
- machine made - Belgium

## STANDARD SIZES

- 160x230 cm
- 200x290 cm
- 240x340 cm
- 280x380 cm

## SPECIAL SIZES

- max width 280 cm
- max length 380 cm

## SHAPES



## DELIVERY

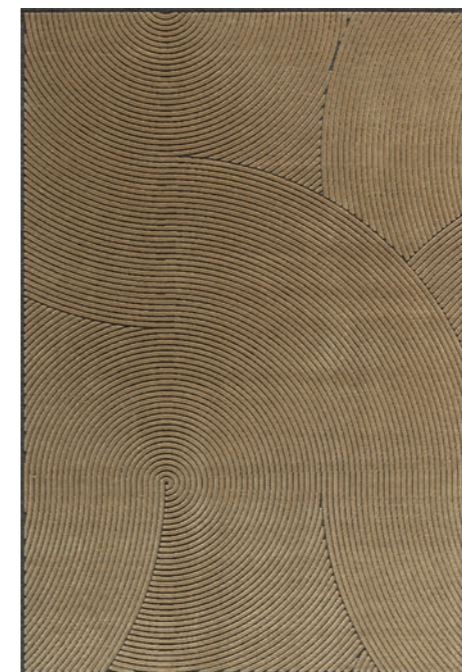
- standard sizes: 2 weeks
- special sizes: 4 weeks



grey/grey



grey/cognac



grey/gold



ivory/ivory



# Chiara 1016

## QUALITY

- viscose, wool
- 1550g/m<sup>2</sup> - 4 mm
- machine made - Belgium

## STANDARD SIZES

- 160x230 cm
- 200x290 cm
- 240x340 cm
- 280x380 cm

## SPECIAL SIZES

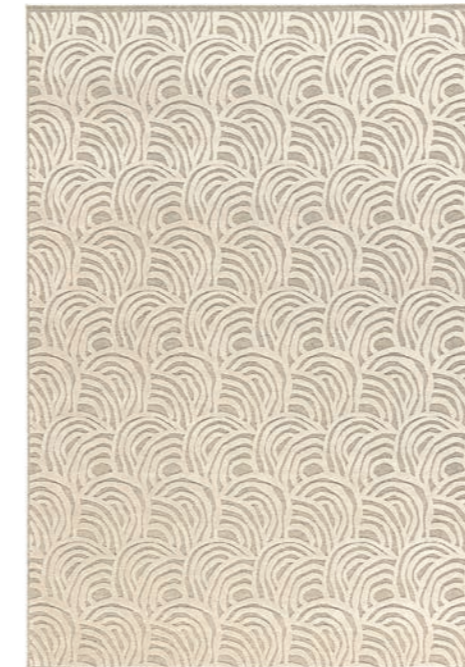
- max width 280 cm
- max length 380 cm

## SHAPES



## DELIVERY

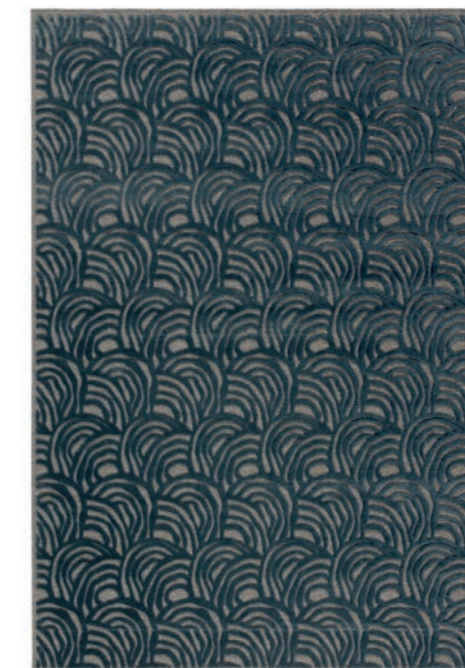
- standard sizes: 2 weeks
- special sizes: 4 weeks



beige/beige



grey/anthracite



grey/blue



beige/gold





# Chiara 1018

## QUALITY

- viscose, wool
- 1550g/m<sup>2</sup> - 4 mm
- machine made - Belgium

## STANDARD SIZES

- 160x230 cm
- 200x290 cm
- 240x340 cm
- 280x380 cm

## SPECIAL SIZES

- max width 280 cm
- max length 380 cm

## SHAPES



## DELIVERY

- standard sizes: 2 weeks
- special sizes: 4 weeks



beige/beige



grey/tobacco



grey/blue



beige/gold



# Chiara 826

## QUALITY

- viscose, wool
- 1550g/m<sup>2</sup> - 4 mm
- machine made - Belgium

## STANDARD SIZES

- 160x230 cm
- 200x290 cm
- 240x340 cm
- 280x380 cm

## SPECIAL SIZES

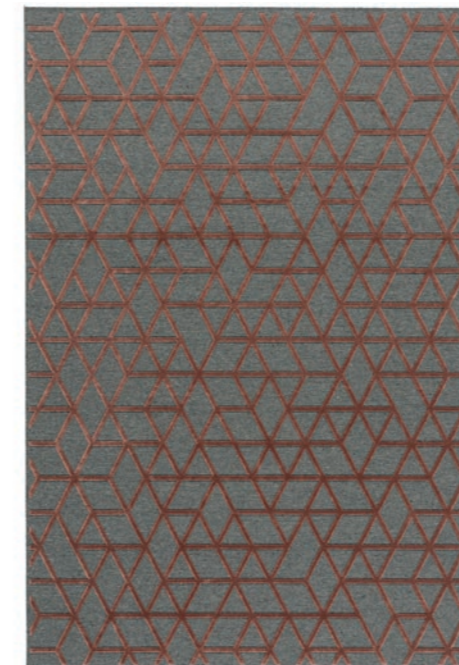
- max width 280 cm
- max length 380 cm

## SHAPES



## DELIVERY

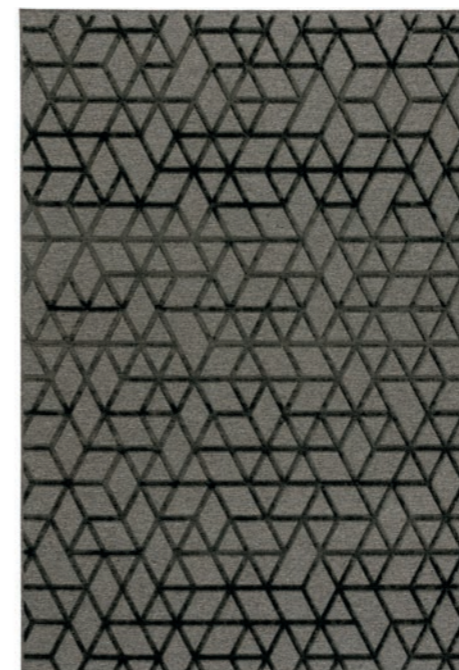
- standard sizes: 2 weeks
- special sizes: 4 weeks



grey/red



beige/off-white



grey/anthracite



beige/grey



# Chiara 949

## QUALITY

- viscose, wool
- 1550g/m<sup>2</sup> - 4 mm
- machine made - Belgium

## STANDARD SIZES

- 160x230 cm
- 200x290 cm
- 240x340 cm
- 280x380 cm

## SPECIAL SIZES

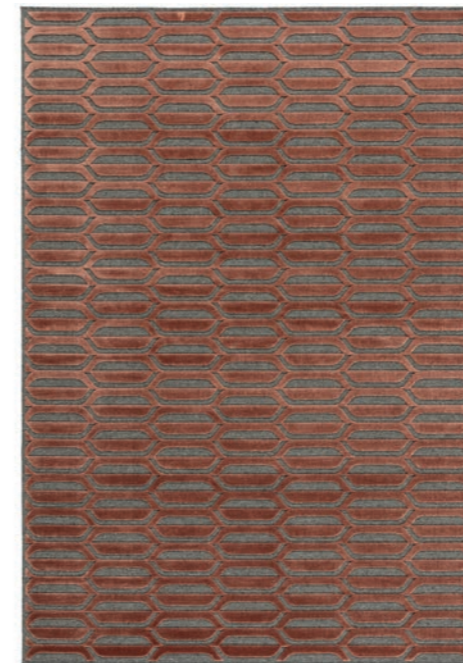
- max width 280 cm
- max length 380 cm

## SHAPES



## DELIVERY

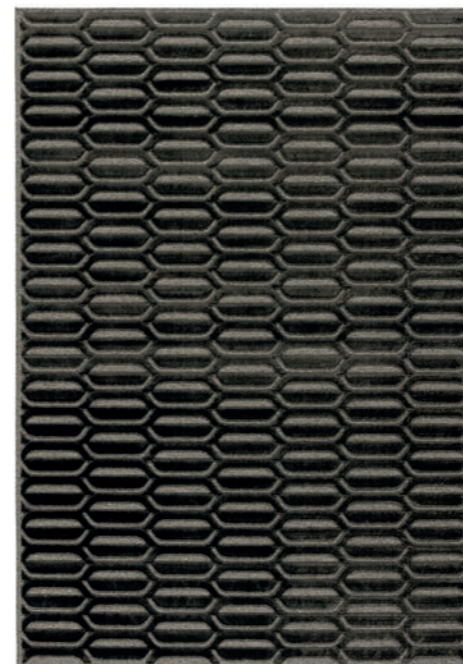
- standard sizes: 2 weeks
- special sizes: 4 weeks



grey/red



grey/beige



grey/anthracite



beige/beige



# Faro 880

## QUALITY

- viscose, polyester
- 1600g/m<sup>2</sup> - 3,5 mm
- machine made - Belgium

## STANDARD SIZES

- 160x230 cm
- 200x300 cm
- 240x340 cm
- 280x380 cm

## SPECIAL SIZES

- max width 280 cm
- max length 380 cm

## SHAPES



## DELIVERY

- standard sizes: 2 weeks
- special sizes: 4 weeks



olive



brown/black



grey/silver



beige/gold



# Faro 884

## QUALITY

- viscose, polyester
- 1600g/m<sup>2</sup> - 3,5 mm
- machine made - Belgium

## STANDARD SIZES

- 160x230 cm
- 200x300 cm
- 240x340 cm
- 280x380 cm

## SPECIAL SIZES

- max width 280 cm
- max length 380 cm

## SHAPES



## DELIVERY

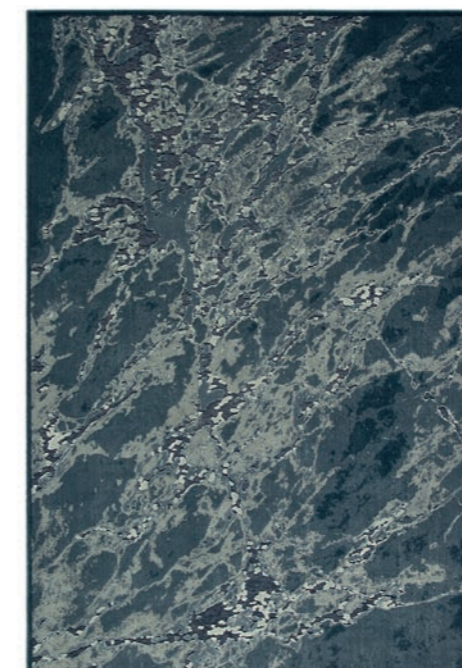
- standard sizes: 2 weeks
- special sizes: 4 weeks



silver



grey



blue



brown/black



# Mila 011

## QUALITY

- wool, viscose
- 1600g/m<sup>2</sup> - 4 mm
- machine made - Belgium

## STANDARD SIZES

- 160x230 cm
- 200x290 cm
- 240x340 cm
- 280x380 cm

## SPECIAL SIZES

- max width 280 cm
- max length 380 cm

## SHAPES



## DELIVERY

- standard sizes: 2 weeks
- special sizes: 4 weeks



beige



silver



grey



red



# Mila 016

## QUALITY

- wool, viscose
- 1600g/m<sup>2</sup> - 4 mm
- machine made - Belgium

## STANDARD SIZES

- 160x230 cm
- 200x290 cm
- 240x340 cm
- 280x380 cm

## SPECIAL SIZES

- max width 280 cm
- max length 380 cm

## SHAPES



## DELIVERY

- standard sizes: 2 weeks
- special sizes: 4 weeks



beige



silver



grey



blue



# Loni 105

## QUALITY

- viscose, wool
- 1600g/m<sup>2</sup> - 4 mm
- machine made - Belgium

## STANDARD SIZES

- 160x230 cm
- 200x290 cm
- 240x340 cm
- 280x380 cm

## SPECIAL SIZES

- max width 280 cm
- max length 380 cm

## SHAPES



## DELIVERY

- standard sizes: 2 weeks
- special sizes: 4 weeks



beige



grey



bronze



blue





# Loni 3128

## QUALITY

- viscose, wool
- 1600g/m<sup>2</sup> - 4 mm
- machine made - Belgium

## STANDARD SIZES

- 160x230 cm
- 200x290 cm
- 240x340 cm
- 280x380 cm

## SPECIAL SIZES

- max width 280 cm
- max length 380 cm

## SHAPES



## DELIVERY

- standard sizes: 2 weeks
- special sizes: 4 weeks



beige



grey



bronze



ocher



# Himalaya

## QUALITY

- viscose, polyester
- 2200g/m<sup>2</sup> - 7,5 mm
- machine made - Belgium

## STANDARD SIZES

- 160x230 cm
- 200x300 cm
- 240x340 cm
- 280x380 cm

## SPECIAL SIZES

- max width 280 cm
- max length 380 cm

## SHAPES



## DELIVERY

- standard sizes: 2 weeks
- special sizes: 4 weeks



809 beige/off-white



810 beige/off-white



840 off-white/blue



878 grey/beige



# Classico 961-963

## QUALITY

- viscose
- 1700g/m<sup>2</sup> - 3,5 mm
- machine made - Belgium

## STANDARD SIZES

- 160x230 cm
- 200x290 cm
- 240x340 cm
- 280x380 cm

## DELIVERY

- standard sizes: 2 weeks



des. 961 – stone 475



des. 961 – stone 477



des. 963 – stone 475



des. 963 – stone 477



# Venice

## QUALITY

- viscose
- 840g/m<sup>2</sup> - 3,5 mm
- machine made - Belgium

## STANDARD SIZES

- 160x230 cm
- 200x290 cm

## DELIVERY

- standard sizes: 2 weeks



des. 9792 – beige/aqua



des. 9810 – beige/grey



des. 9883 – anthracite/multicolour



des. 9898 – beige/grey



# Venice

## QUALITY

- viscose
- 840g/m<sup>2</sup> - 3,5 mm
- machine made - Belgium

## STANDARD SIZES

- 160x230 cm
- 200x290 cm

## DELIVERY

- standard sizes: 2 weeks



des. 9930 – stone/anthracite



des. 9937 – red multicolour



des. 9994 – beige



des. 9994 – stone



# Tara Deluxe

## QUALITY

- polyester microfiber
- 3000g/m<sup>2</sup> - 7,5 mm
- machine made - Belgium

## STANDARD SIZES

- 160x230 cm
- 200x290 cm
- 240x340 cm

## SPECIAL SIZES

- minimum 3 m<sup>2</sup>
- max width 390 cm

## SHAPES

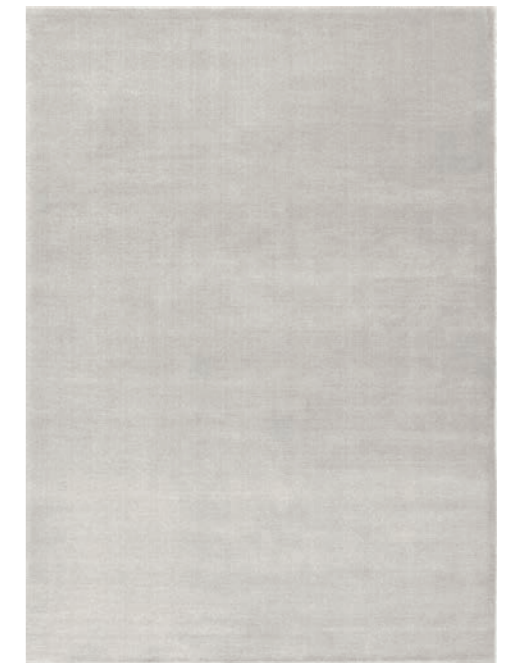


## DELIVERY

- standard sizes: 2 weeks
- special sizes: 3 weeks



beige



light grey



taupe



anthracite



# Tara Deluxe

## QUALITY

- polyester microfiber
- 3000g/m<sup>2</sup> - 7,5 mm
- machine made - Belgium

## STANDARD SIZES

- 160x230 cm
- 200x290 cm
- 240x340 cm

## SPECIAL SIZES

- minimum 3 m<sup>2</sup>
- max width 390 cm

## SHAPES



## DELIVERY

- standard sizes: 2 weeks
- special sizes: 3 weeks



gold



olive green



rust



navy

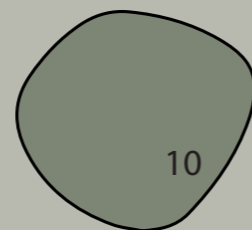
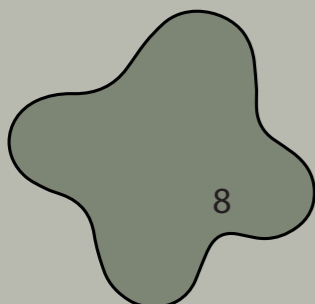
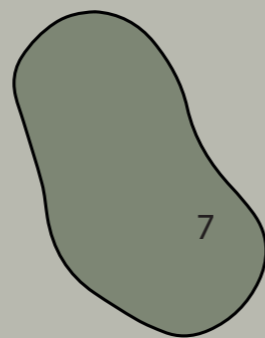
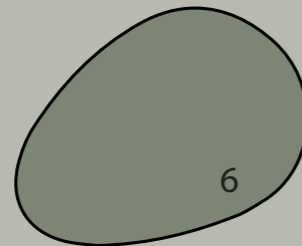
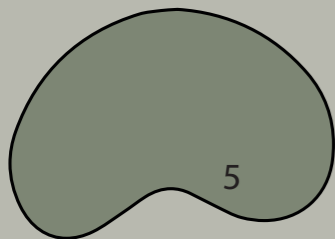
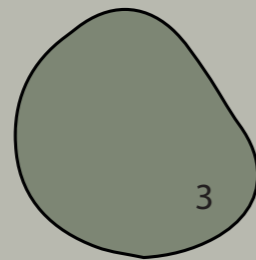
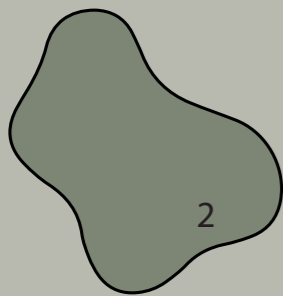
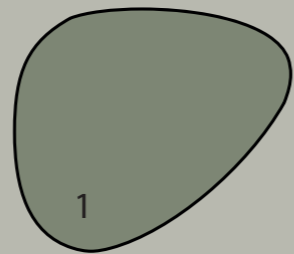


# Organic shapes

## Let your imagination run wild

All rugs with the remark "custom size" can be custom made in the shapes below.

Feel free to ask for a quotation or other specific shapes.





# Merron

## QUALITY

- acrylic, polyester, viscose, cotton
- chenille - 1540g/m<sup>2</sup> - 3,5 mm
- machine made - Belgium

## STANDARD SIZES

- 170x230 cm
- 200x300 cm
- 240x340 cm

## DELIVERY

- standard sizes: 2 weeks



beige



gold



graphite



grey



# Curzo

## QUALITY

- acrylic, polyester, viscose, cotton
- chenille - 1540g/m<sup>2</sup> - 3,5 mm
- machine made - Belgium

## STANDARD SIZES

- 170x230 cm
- 200x300 cm
- 240x340 cm

## DELIVERY

- standard sizes: 2 weeks



taupe



basalt



stone



natural



# Mystic

## QUALITY

- acrylic, polyester, viscose, cotton
- chenille - 1540g/m<sup>2</sup> - 3,5 mm
- machine made - Belgium

## STANDARD SIZES

- 170x230 cm
- 200x300 cm
- 240x340 cm
- 320x420 cm

## SPECIAL SIZES

- max width 320 cm
- max length 420 cm

## SHAPES



## DELIVERY

- standard sizes: 2 weeks
- special sizes: 4 weeks



silver



taupe



olive



bronze



# Mystic

## QUALITY

- acrylic, polyester, viscose, cotton
- chenille - 1540g/m<sup>2</sup> - 3,5 mm
- machine made - Belgium

## STANDARD SIZES

- 170x230 cm
- 200x300 cm
- 240x340 cm
- 320x420 cm

## SPECIAL SIZES

- max width 320 cm
- max length 420 cm

## SHAPES



## DELIVERY

- standard sizes: 2 weeks
- special sizes: 4 weeks



navy



anthracite



grey



aubergine



# Rabat

## QUALITY

- acrylic, polyester, viscose, cotton
- chenille - 1540g/m<sup>2</sup> - 3,5 mm
- machine made - Belgium

## STANDARD SIZES

- 170x230 cm
- 200x300 cm
- 240x340 cm

## SPECIAL SIZES

- max width 240 cm
- max length 340 cm

## SHAPES



## DELIVERY

- standard sizes: 2 weeks
- special sizes: 4 weeks



silver grey



blue taupe



green taupe



gold



# Nuance

## QUALITY

- acrylic, polyester, viscose, cotton
- chenille - 1540g/m<sup>2</sup> - 3,5 mm
- machine made - Belgium

## STANDARD SIZES

- 170x230 cm
- 200x300 cm
- 240x340 cm

## SPECIAL SIZES

- max width 240 cm
- max length 340 cm

## SHAPES



## DELIVERY

- standard sizes: 2 weeks
- special sizes: 4 weeks



green



olive



silver



grey



# Grunge

## QUALITY

- acrylic, polyester, viscose, cotton
- chenille - 1540g/m<sup>2</sup> - 3,5 mm
- machine made - Belgium

## STANDARD SIZES

- 155x230 cm
- 200x290 cm
- 240x340 cm
- 320x420 cm
- Ø 200 cm

## SPECIAL SIZES

- max width 320 cm
- max length 420 cm

## SHAPES



## DELIVERY

- standard sizes: 2 weeks
- special sizes: 4 weeks



ice



sand



sage



moon



# Meda

## QUALITY

- acrylic, polyester, viscose, cotton
- chenille - 1540g/m<sup>2</sup> - 3,5 mm
- machine made - Belgium

## STANDARD SIZES

- 170x230 cm
- 200x300 cm
- 240x340 cm

## DELIVERY

- standard sizes: 2 weeks



beige



rust



denim



wine red





# Meda

## QUALITY

- acrylic, polyester, viscose, cotton
- chenille - 1540g/m<sup>2</sup> - 3,5 mm
- machine made - Belgium

## STANDARD SIZES

- 170x230 cm
- 200x300 cm
- 240x340 cm

## DELIVERY

- standard sizes: 2 weeks



silver



grey



metallic



old pink



# Bolzano

## QUALITY

- acrylic, polyester, viscose, cotton
- chenille - 1540g/m<sup>2</sup> - 3,5 mm
- machine made - Belgium

## STANDARD SIZES

- 170x230 cm
- 200x300 cm
- 240x340 cm

## SPECIAL SIZES

- max width 240 cm
- max length 340 cm

## SHAPES



## DELIVERY

- standard sizes: 2 weeks
- special sizes: 4 weeks



beige



bronze



army green



grey



# Geometrics

## QUALITY

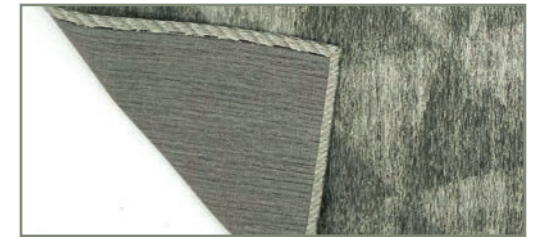
- acrylic, polyester, viscose, cotton
- chenille - 1540g/m<sup>2</sup> - 3,5 mm
- machine made - Belgium

## STANDARD SIZES

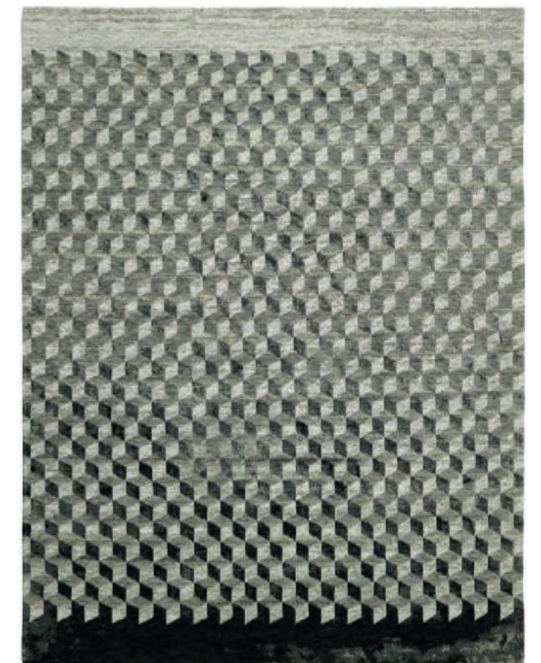
- 170x230 cm
- 200x300 cm
- 240x340 cm

## DELIVERY

- standard sizes: 2 weeks



coates grey



infini taupe



rombina beige/black



nika silver



# Diamo

## QUALITY

- acrylic, polyester
- chenille - 1150g/m<sup>2</sup> - 3,5 mm
- machine made - Belgium

## STANDARD SIZES

- 155x230 cm
- 200x300 cm

## SPECIAL SIZES

- max width 200 cm
- max length 300 cm

## DELIVERY

- standard sizes: 2 weeks
- special sizes: 4 weeks

## SHAPES



brown



cognac



ice



silver

IN- AND OUTDOOR USE



# Freek

## QUALITY

- polypropylene, PES
- chenille - 1080g/m<sup>2</sup> - 3 mm
- machine made - Belgium

## STANDARD SIZES

- 160x230 cm
- 200x300 cm

## DELIVERY

- standard sizes: 2 weeks



IN- AND OUTDOOR USE



carbon



green



silver



taupe



# Ecstasy

## QUALITY

- polypropylene, PES
- chenille - 1080g/m<sup>2</sup> - 3 mm
- machine made - Belgium

## STANDARD SIZES

- 160x230 cm
- 200x300 cm

## DELIVERY

- standard sizes: 2 weeks



IN- AND OUTDOOR USE



grey/black



red

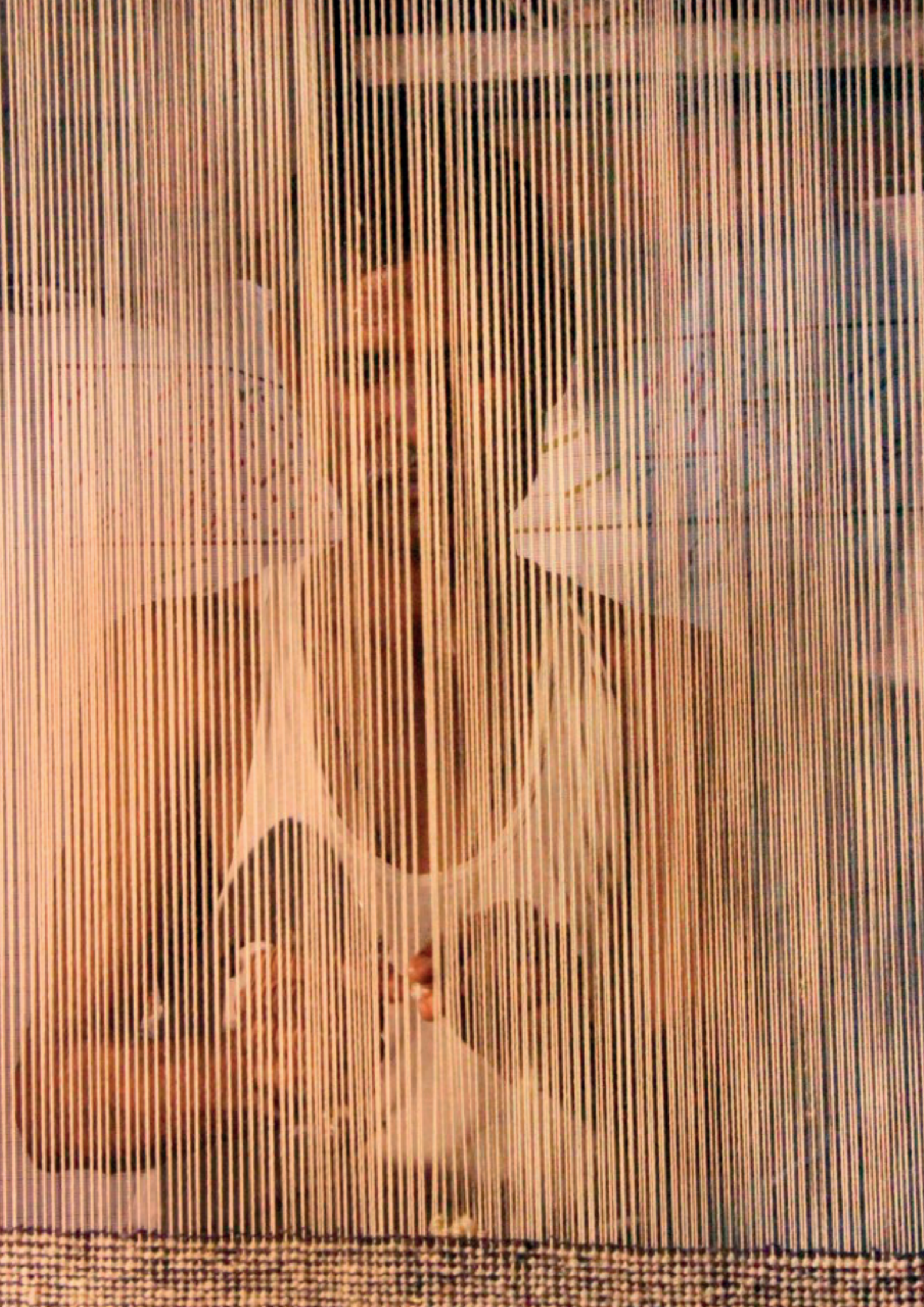


green



multicolour





# Handmade collection

75



Unique, luxury, handwoven,  
honest and ecological products

# Corfu

## QUALITY

- recycled nylon, cotton backing
- handloom – 3400 g/m<sup>2</sup> - 8 mm
- origin - India

## STANDARD SIZES

- 160x230 cm
- 200x290 cm
- 240x340 cm

## SPECIAL SIZES

- minimum 3m<sup>2</sup>
- max width 500 cm

## SHAPES



## DELIVERY

- standard sizes: 2 weeks
- special sizes: 14 weeks

*For a faster delivery please ask for a quotation*



ivory



silver



sage



egg blue





# Corfu

## QUALITY

- recycled nylon, cotton backing
- handloom – 3400 g/m<sup>2</sup> - 8 mm
- origin - India

## STANDARD SIZES

- 160x230 cm
- 200x290 cm
- 240x340 cm

## SPECIAL SIZES

- minimum 3m<sup>2</sup>
- max width 500 cm

## SHAPES



## DELIVERY

- standard sizes: 2 weeks
- special sizes: 14 weeks

*For a faster delivery please ask for a quotation*



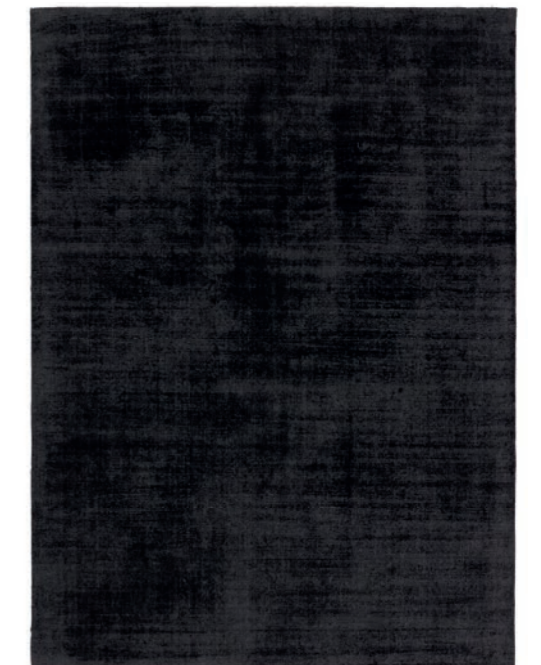
rust



hunter



taupe



charcoal



# Bastia

## QUALITY

- wool, cotton backing
- handtuft – 3800 g/m<sup>2</sup> - 8 mm
- origin - India

## STANDARD SIZES

- 160x230 cm
- 200x290 cm
- 240x340 cm

## DELIVERY

- standard sizes: 2 weeks



beige



multicolor



# Corte

## QUALITY

- wool, cotton backing
- handtuft – 3800 g/m<sup>2</sup> - 8 mm
- origin - India

## STANDARD SIZES

- 160x230 cm
- 200x290 cm
- 240x340 cm

## DELIVERY

- standard sizes: 2 weeks



natural



yellow



# Piana

## QUALITY

- wool, cotton backing
- handtuft – 3800 g/m<sup>2</sup> - 5 to 8 mm
- origin - India

## STANDARD SIZES

- 160x230 cm
- 200x290 cm
- 240x340 cm
- stone shape 200x290 cm

## DELIVERY

- standard sizes: 2 weeks



off-white



dark beige



light grey



green



# Piana

stone shape

## QUALITY

- wool, cotton backing
- handtuft – 3800 g/m<sup>2</sup> - 5 to 8 mm
- origin - India

## STANDARD SIZES

- 160x230 cm
- 200x290 cm
- 240x340 cm
- stone shape 200x290 cm

## DELIVERY

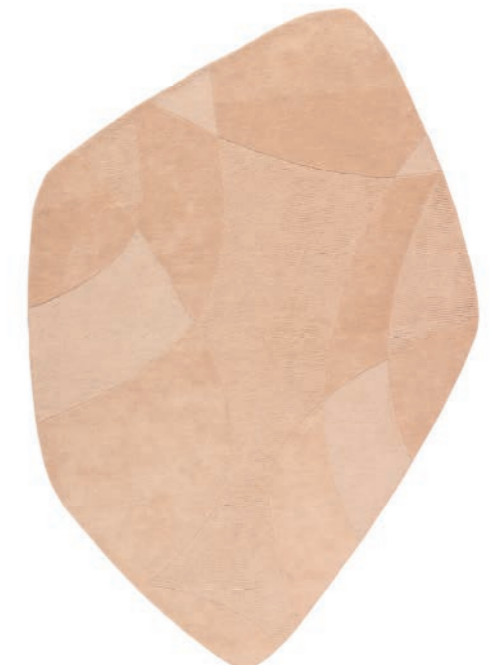
- standard sizes: 2 weeks



stone shape



off-white



dark beige



light grey



green



# Elba

## QUALITY

- wool, cotton
- handloom - 2500g/m<sup>2</sup> - 10 mm
- origin - India

## STANDARD SIZES

- 160x230 cm
- 200x290 cm
- 240x340 cm

## DELIVERY

- standard sizes : 2 weeks



white



beige



brown



dark brown



# Kreta

## QUALITY

- modified polyester, PET, cotton backing
- handloom - 4920g/m<sup>2</sup> - 22 mm
- origin - India

## STANDARD SIZES

- 160x230 cm
- 200x290 cm
- 240x340 cm

## SPECIAL SIZES

- minimum 3m<sup>2</sup>
- max width 390 cm

## SHAPES



## DELIVERY

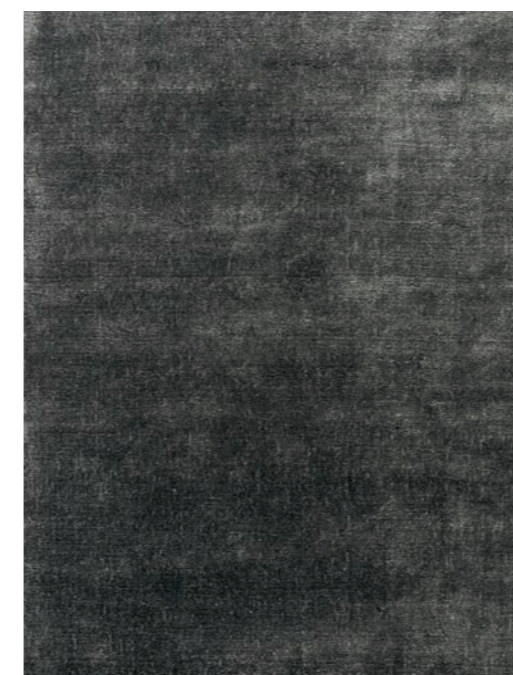
- standard sizes: 2 weeks
- special sizes: 3 weeks



beige



cream



mouse grey



warm grey



# Pella

## QUALITY

- modified polyester, PET, cotton backing
- handloom - 3000g/m<sup>2</sup> - 42 mm
- origin - India

## STANDARD SIZES

- 160x230 cm
- 200x290 cm
- 240x340 cm

## SPECIAL SIZES

- minimum 3m<sup>2</sup>
- max width 390 cm

## SHAPES



## DELIVERY

- standard sizes: 2 weeks
- special sizes: 3 weeks



champagne



green mix



taupe



white





# Ravenna

## QUALITY

- wool, viscose, cotton
- pitloom - 2900g/m<sup>2</sup> - 20 mm
- origin - India

## STANDARD SIZES

- 160x230 cm
- 200x290 cm
- 240x340 cm

## DELIVERY

- standard sizes: 2 weeks



green mix



silver



taupe



white



# Napoli

## QUALITY

- wool, viscose, cotton
- handloom - 3900g/m<sup>2</sup> - 15 mm
- origin - India

## STANDARD SIZES

- 160x230 cm
- 200x290 cm
- 240x340 cm

## DELIVERY

- standard sizes: 2 weeks



grey



natural mix



silver



taupe



# Madeira

## QUALITY

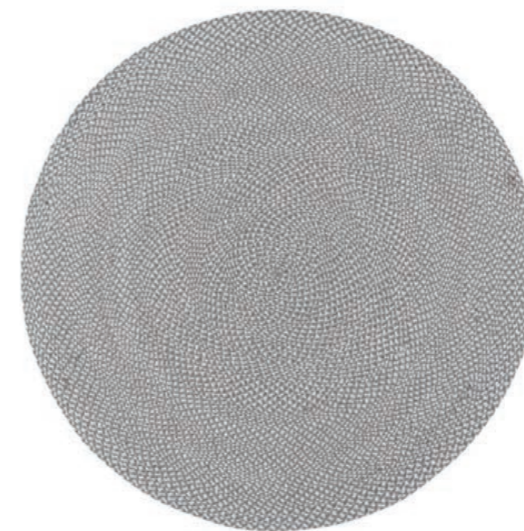
- PET yarn
- handwoven - 1700g/m<sup>2</sup> - 6 mm
- origin - India

## STANDARD SIZES

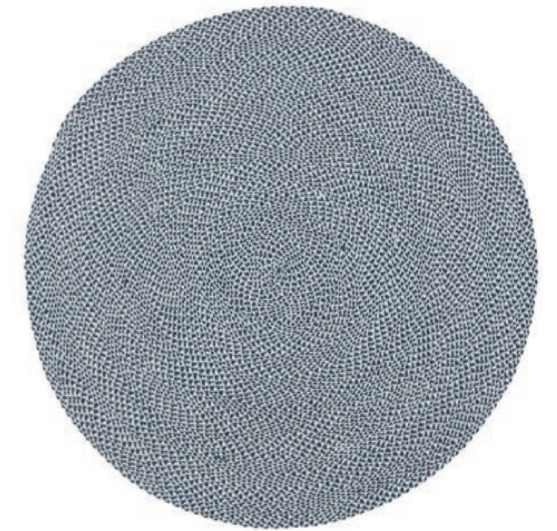
- Ø 150 cm
- Ø 200 cm

## DELIVERY

- standard sizes: 2 weeks



beige/grey/white



anthracite/grey/white

IN- AND OUTDOOR USE







**Aciento bv**

Luipaardstraat 12 - 8500 Kortrijk - Belgium

+32 (0)56 51 45 71

info@aciento.com

**www.aciento.com**